



WELCOME TO THE  
WORLD WITHIN  MINUTES

CRAFTING  
**TOMORROW**  
WITH VISION

# SUCCESS IS A JOURNEY

A luxurious residential abode, designed especially to suit your taste and standard. **'DATTANI VERTEX'** is ideally located in Vasai. The project is easily accessible from the Western Express Highway, Vasai & Naigaon Railway Stations, Shopping Malls, Hospitals, Schools, Colleges, Clubs, Restaurants, Hotels, Beaches in Vasai, Places of Worship, Anything else you would need. Spacious, airy, tastefully designed; each apartment is a potential dream home for you.

The impressive multi-storeyed edifice offers well designed **2BHK** luxurious apartments generously laid out with large bedrooms, ample living, dining areas and balcony area. Excellent amenities are provided for the residents to live in a comfortable lifestyle. The construction of **'DATTANI VERTEX'** is keeping in mind the considerations of an aesthetic balance, the function, a suitability with the neighborhood and the varying individual needs.



In Real Estate  
Sector since the  
last 50 years

More than 100  
buildings  
built till date

Millions of sq. ft.  
project completed  
successfully

25 lakh sq. ft. of  
development planned  
in the Western  
suburbs



# AN INTEGRATED LIFESTYLE

For the ones who want to make the most of life

Welcome to **Dattani's thoughtfully planned development at Vasai West**. A destination offering an exceptional lifestyle to you and your family within the homes & beyond.

## Presenting 'DATTANI VERTEX'

- ▲ "The 16-story structure rises gracefully, its elevation commanding attention from every angle."
- ▲ "This high rise Building's flats offers serene living, surrounded by verdant greenery and fresh, clean air every day."
- ▲ "The building welcomes visitors with an elegant and spacious entrance lobby that exudes sophistication."
- ▲ "Live in a well-connected flat surrounded by every essential convenience."

**DATTANI**   
**Vertex**  
VASAI (W)  
HI-TECH RESIDENTIAL PROJECTS - E & F Wings





## ADDITIONAL CLUB AMENITIES\*

Beyond facilities, clubs offer benefits like meeting new people, gaining exclusive access to amenities, improving well-being, and participating in a community, as highlighted by DC Clubs House.



\*Club charges as applicable



## PROJECT SURROUNDED BY:

The goal is to enhance residents' or users' lifestyle by providing easy access to essential and desirable services, promoting connectivity, convenience, and a better quality of life.



MOVIE THEATRE



DATTANI PRISM



KIDS ZONE



PODAR INTERNATIONAL SCHOOL



HOSPITAL



RELIANCE SMART BAZAAR

**WING 'E'**

The floor plan for Wing 'E' is a symmetrical layout divided into four quadrants by a central vertical corridor and a horizontal corridor. The central area contains a lobby (7'5"x16") with stairs and lifts. The quadrants contain the following rooms:

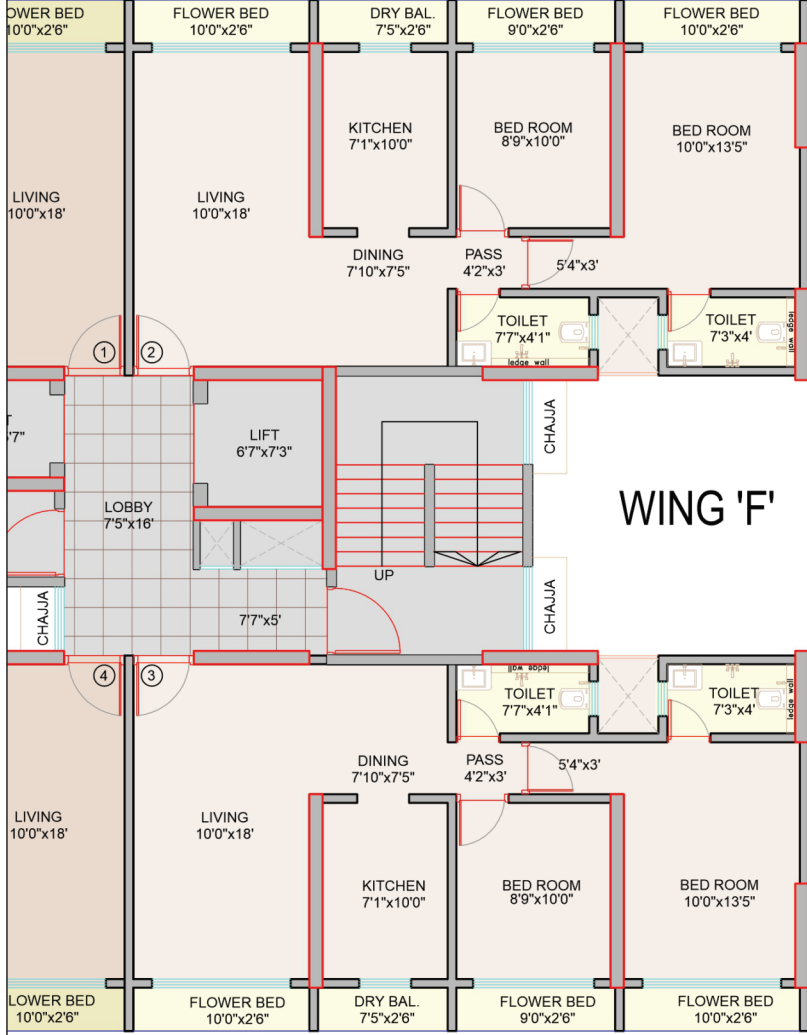
- Top Left Quadrant:** BED ROOM (10'0"x13'5"), FLOWER BED (10'0"x2'6"), FLOWER BED (9'0"x2'6"), DRY BAL. (7'5"x2'6"), FLOWER BED (10'0"x2'6"), LIVING (10'0"x18'), DINING (7'10"x7'5"), KITCHEN (7'1"x10'0"), TOILET (7'3"x4"), TOILET (7'7"x4'1").
- Top Right Quadrant:** BED ROOM (10'0"x13'5"), FLOWER BED (10'0"x2'6"), FLOWER BED (9'0"x2'6"), DRY BAL. (7'5"x2'6"), FLOWER BED (10'0"x2'6"), LIVING (10'0"x18'), DINING (7'10"x7'5"), KITCHEN (7'1"x10'0"), TOILET (7'3"x4"), TOILET (7'7"x4'1").
- Bottom Left Quadrant:** BED ROOM (10'0"x13'5"), FLOWER BED (10'0"x2'6"), FLOWER BED (9'0"x2'6"), 7'5"x2'6" DRY BAL., FLOWER BED (10'0"x2'6"), LIVING (10'0"x18'), DINING (7'10"x7'5"), KITCHEN (7'1"x10'0"), TOILET (7'3"x4"), TOILET (7'7"x4'1").
- Bottom Right Quadrant:** BED ROOM (10'0"x13'5"), FLOWER BED (10'0"x2'6"), FLOWER BED (9'0"x2'6"), 7'5"x2'6" DRY BAL., FLOWER BED (10'0"x2'6"), LIVING (10'0"x18'), DINING (7'10"x7'5"), KITCHEN (7'1"x10'0"), TOILET (7'3"x4"), TOILET (7'7"x4'1").

Other labels include CHAJJA, UP, and DOWN, indicating staircases and elevators. The plan also includes a north arrow and a scale bar.

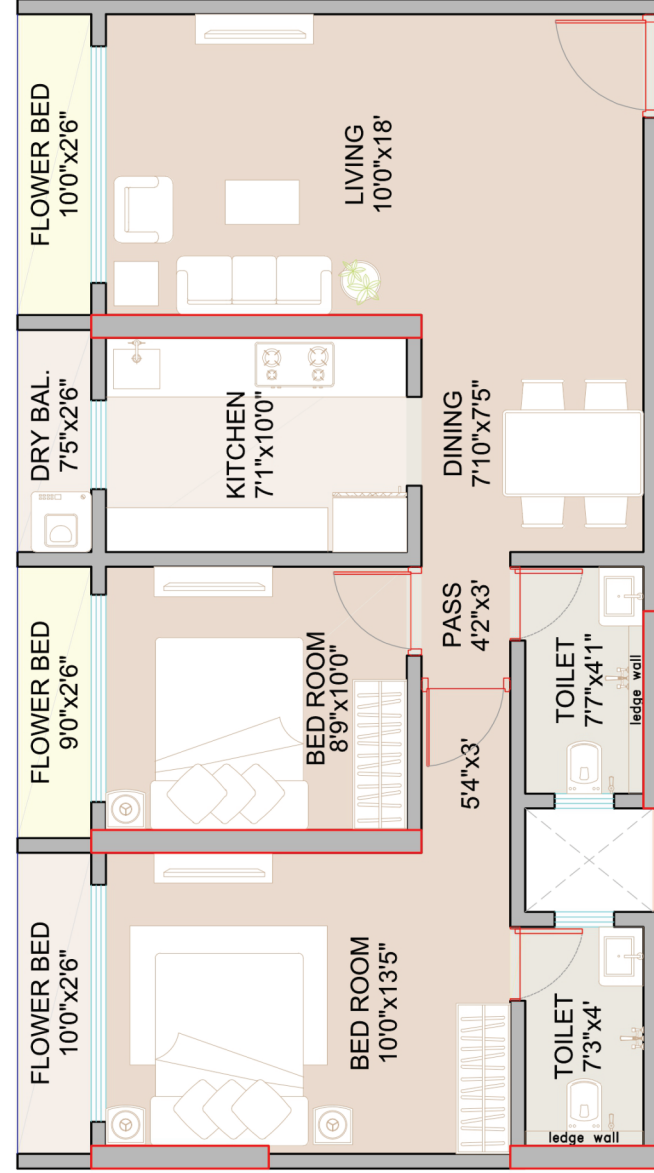


## DATTANI ESTATE DEVELOPERS



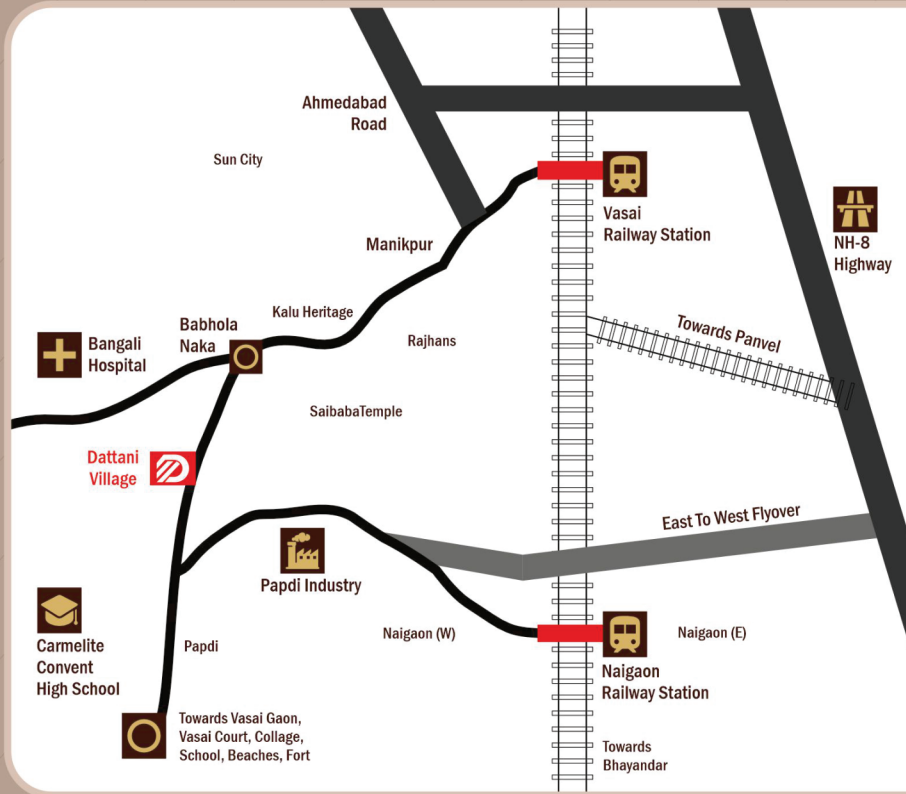


**TYPICAL 2 BHK PLAN**



**DATTANI ESTATE DEVELOPERS**

Dattani Estate Developers over the years have become an enviable brand with flawless record of procuring and cultivating thousands of happy customers during their tenure of half a century. Having several successful projects under its portfolio, Dattani Estate Developers have showcased the highest standards of construction quality in western suburbs of Mumbai.



**DATTANI**  
**Vertex**  
VASAI (W)  
HI-TECH RESIDENTIAL PROJECTS - E & F Wings

Project By :

**DATTANI**  
ESTATE DEVELOPERS

HO: Dattani Estate Developers  
Laxmi Shopping Centre, V.L. Lane,  
Kandivali (W), Mumbai - 400067  
Site Office : Dattani Vertex, E & F Wings  
Maharera Number : P99000049947