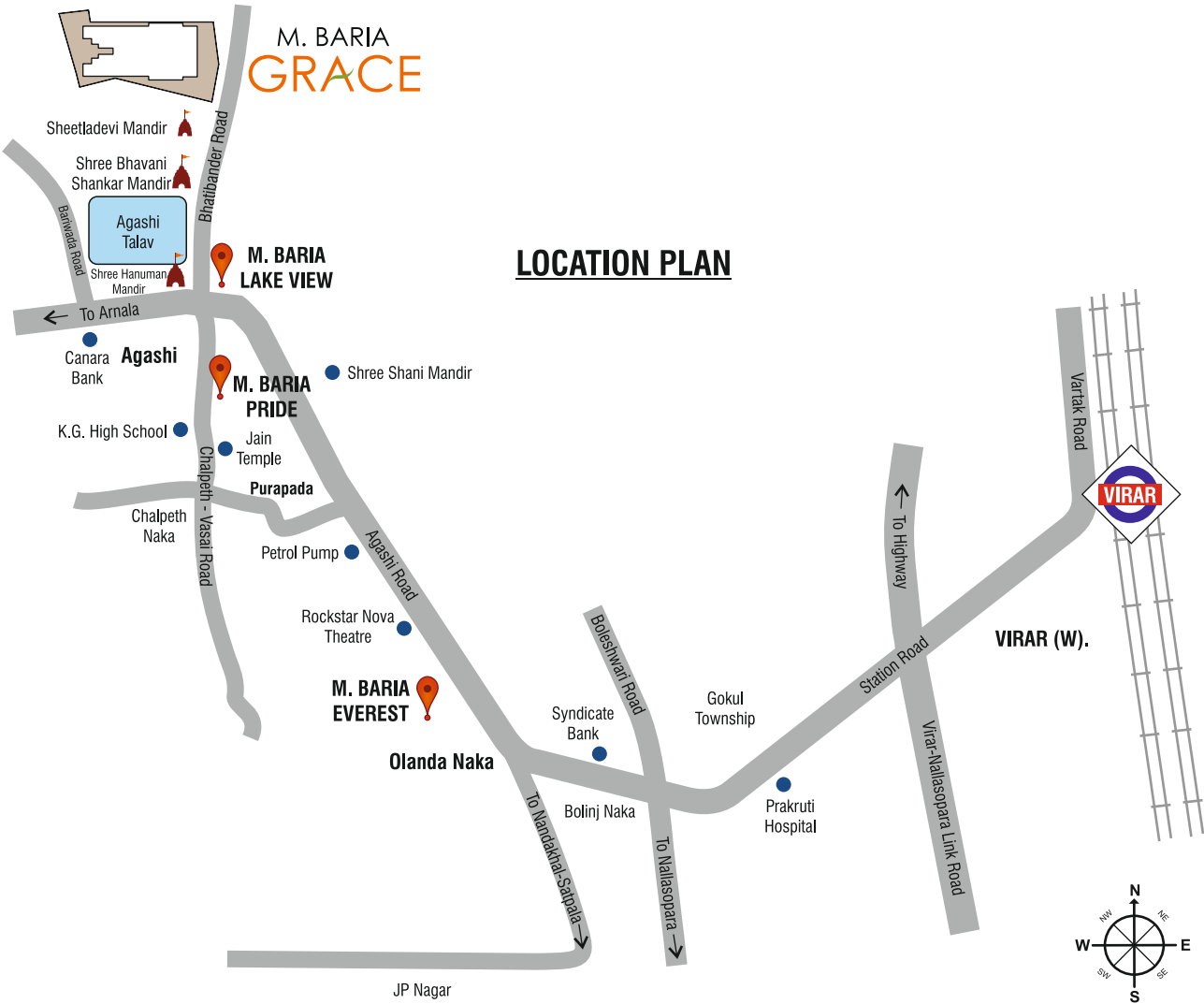


BETTER CONNECTIVITY

- Shree Bhavani Shankar Mandir 0 Mins
 - Talav & Garden 1 Mins
 - Shree Hanuman Mandir 2 Mins
 - Bhaji Market 2 Mins
 - Daily Utility Shops 2 Mins
 - Bus Stop. Auto Stand 5 Mins
- Canara Bank, BCCB, HDFC Bank 0-10 Mins
 - St. James Church & School 10 Mins
 - Jhon XXIII School, KG High School, NP Shah School 0-10 Mins
 - Ancient Jain Mandir 10 Mins
 - Government Hospital 10 Mins
 - Purapada Ground 15 Mins



Contact:
M. BARIA DEVELOPERS
Builders & Land Developers

Call : 9764950000 / 9764950001 / 9764950002

Corporate Office : M. Baria Business House, P. P. Marg, Virat Nagar, Virar (West),
Tal. Vasai, Dist. Palghar - 401 303. | **Website :** www.mbariadevelopers.com



MahaRERA No.:
P99000056216

Disclaimer : All plans, drawings, amenities, features, specifications, other information, etc, mentioned are indicative of the kind of development that is proposed and are subject to the approval of the respective authorities. All renderings, floor plans, pictures, perspective views of buildings and model furnished apartments and maps are the artist's conceptions and not actual buildings, wall, roadways or landscaping. Information given in this advertisement is not final or legally binding and is liable to change. Final discretion remains with the Developers. *T&C apply.



M. BARIA
GRACE

— NEXT TO BHAVANI SHANKAR TEMPLE &
SHEETLADEVI TEMPLE, AGASHI, VIRAR WEST —



M. BARIA GRACE

— NEXT TO BHAVANI SHANKAR TEMPLE &
SHEETLADEVI TEMPLE, AGASHI, VIRAR WEST —

LUXURIOUS 1 & 2 BHK HOMES

JODI FLATS AVAILABLE



PROJECT FEATURES

- Approved by Vasai Virar City Municipal Corporation
- Just 5 km away from Virar Station
- Located amidst acres of greens in a calm & well established residential area
- Stilt+6 Floors
- East-West facing apartments
- Close to Market, Schools, Banks, Hospitals & Temples
- Stilt Parking Available
- Generator backup for Lifts and Common areas
- 24 Hrs Well Water Supply

INTERNAL AMENITIES

LIVING ROOM

- Vitrified flooring.
- Anodized frame aluminium sliding windows
- Plastered smooth finish with paint
- POP wall finishing
- Main door with modern fittings & laminate finishing
- Provision for inverter and AC points



BEDROOM

- Vitrified flooring.
- Anodized frame aluminium sliding windows
- Plastered smooth finish with paint
- POP wall finishing
- Main door with modern fittings & laminate finishing
- Provision for inverter and AC points



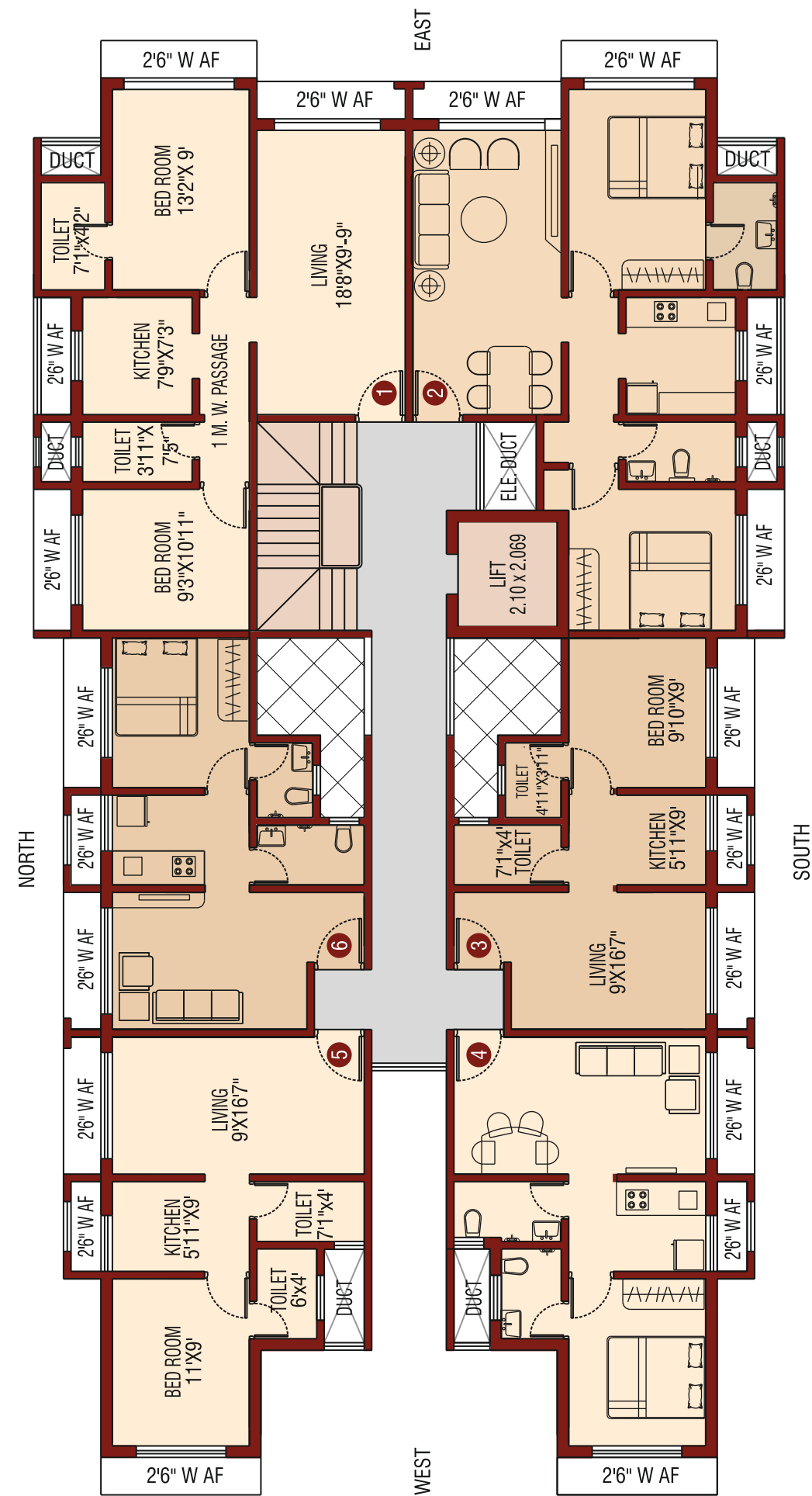
KITCHEN

- Modular kitchen with granite top
- Stainless steel sink with service platform
- Adequate electrical points provided for kitchen appliances



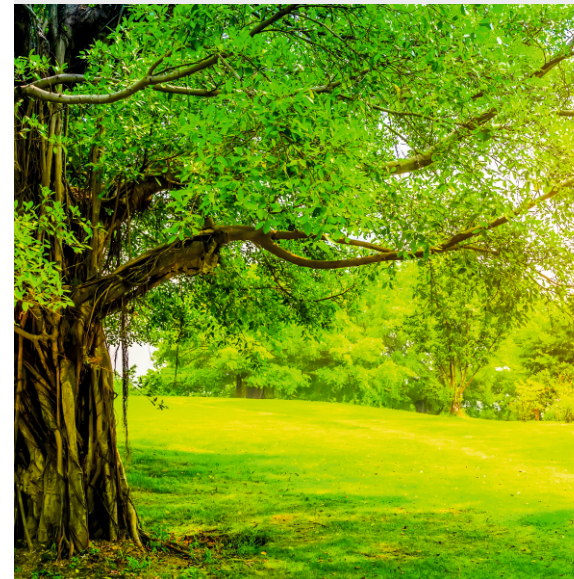
BATHROOM

- Designer bathroom with tiles up to door height
- Granite door frame for bathroom
- Premium sanitary fittings
- Anti-skid rustic tiles
- Branded CP fittings

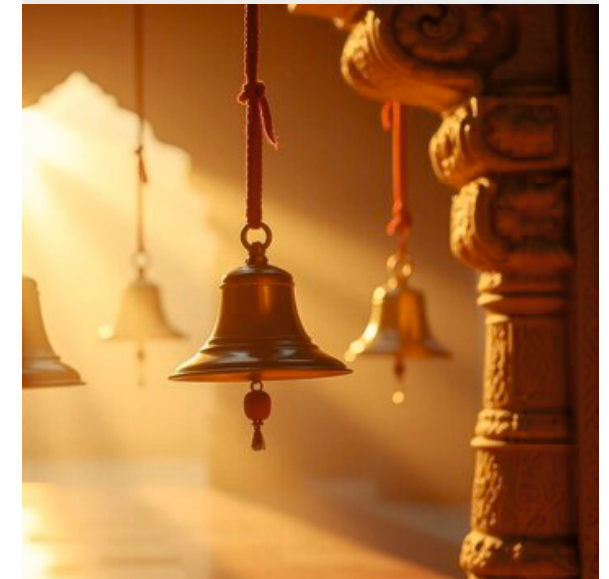


TYPICAL FLOOR PLAN

POLLUTION FREE AREA



HISTORICAL TEMPLES NEARBY



BEACH & RESORTS NEARBY



24 HRS WELL WATER SUPPLY

